

**COLORECTAL CANCER: 10-YEAR RESULT OF A PERSONALIZED CARE
AT THE PLATFORM OF ONCOLOGY**

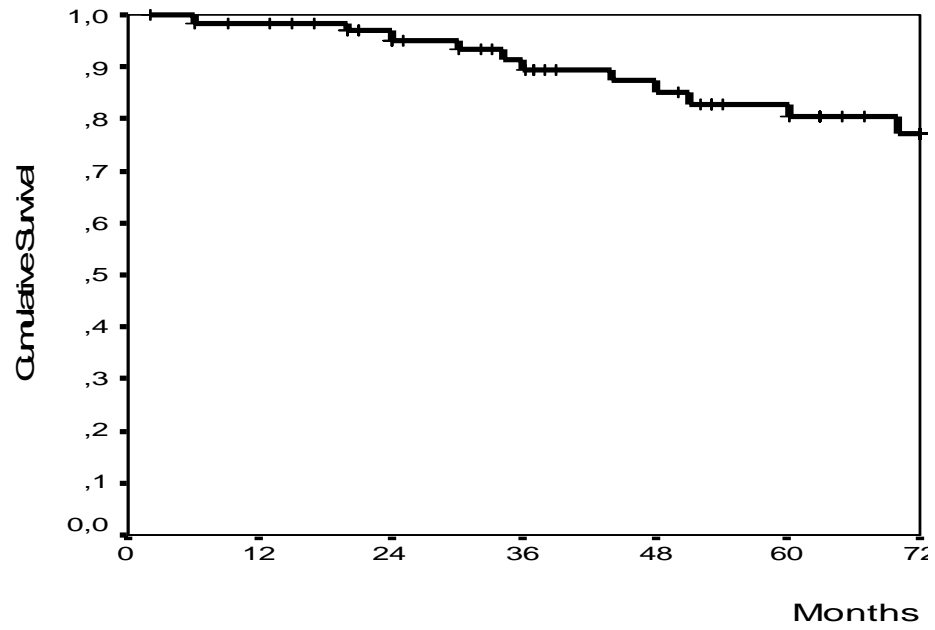


Figure 1. Estimated survival according to Kaplan-Meier for Group A.

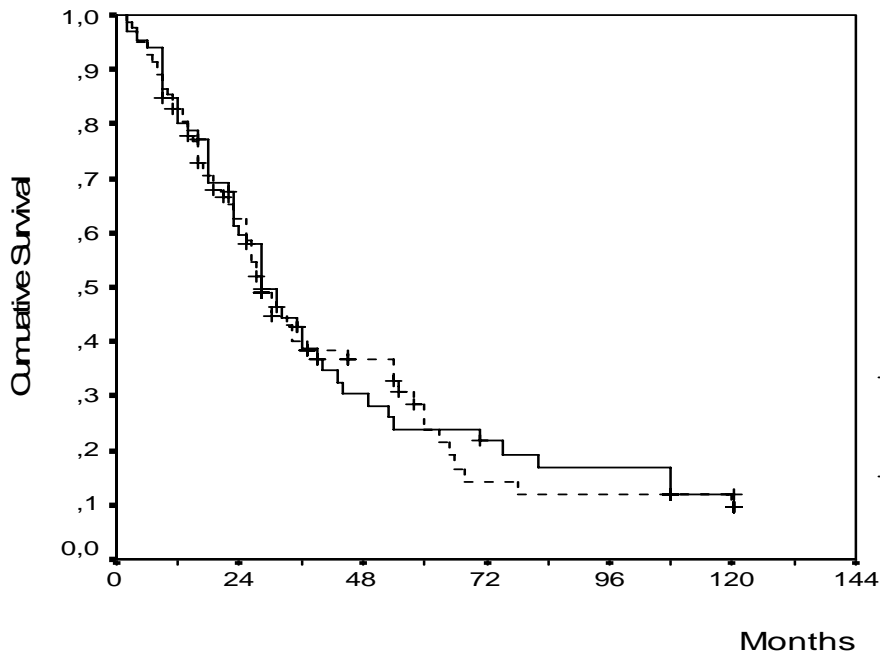
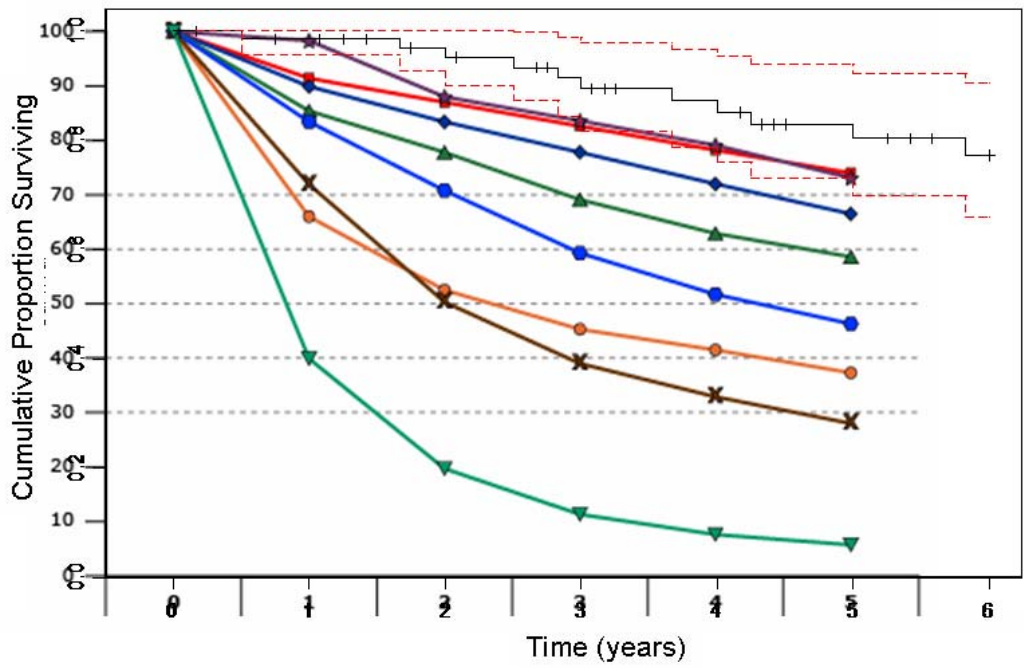
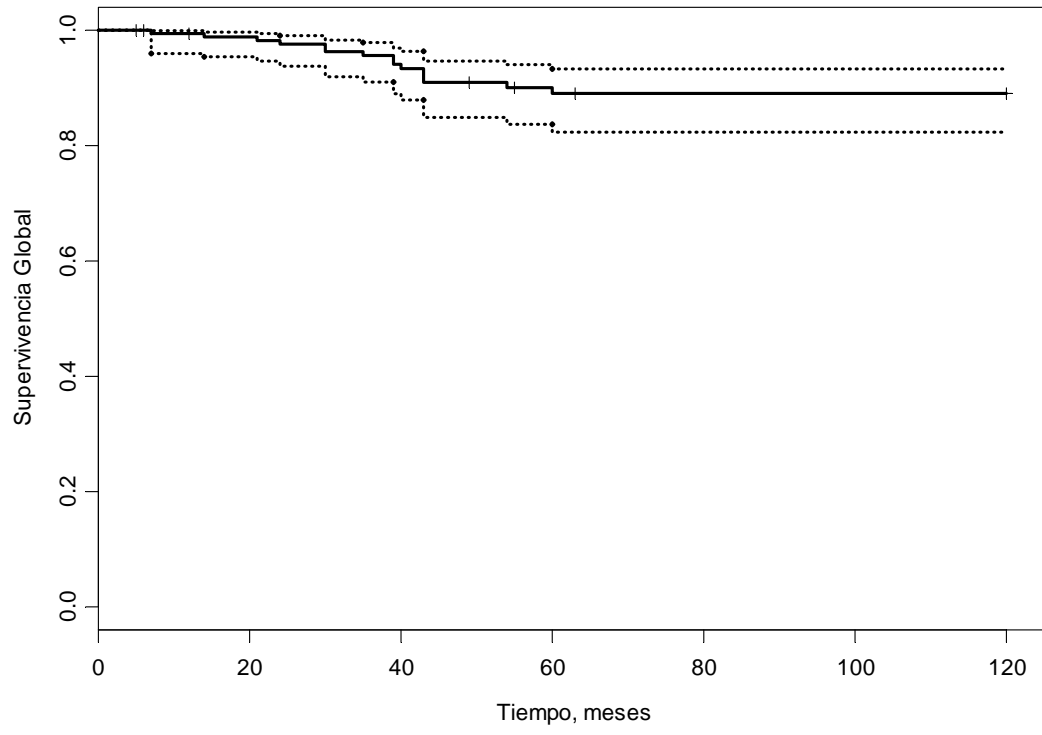


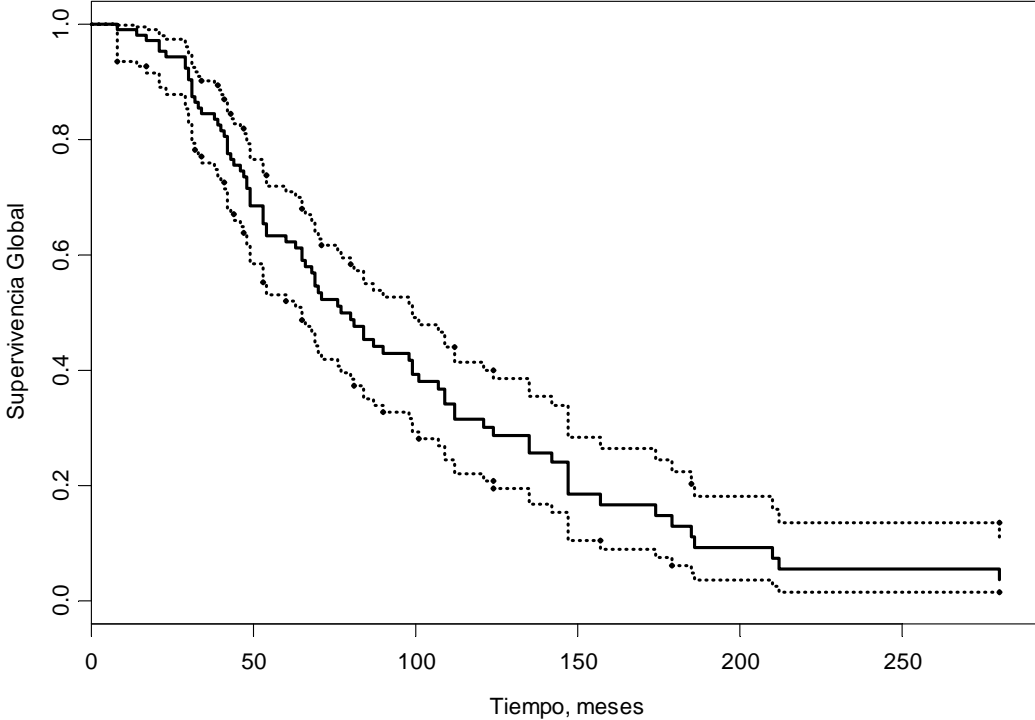
Figure 2. Estimated survival plot (Kaplan-Meier) of Goups B (solid line) and C (dotted line).



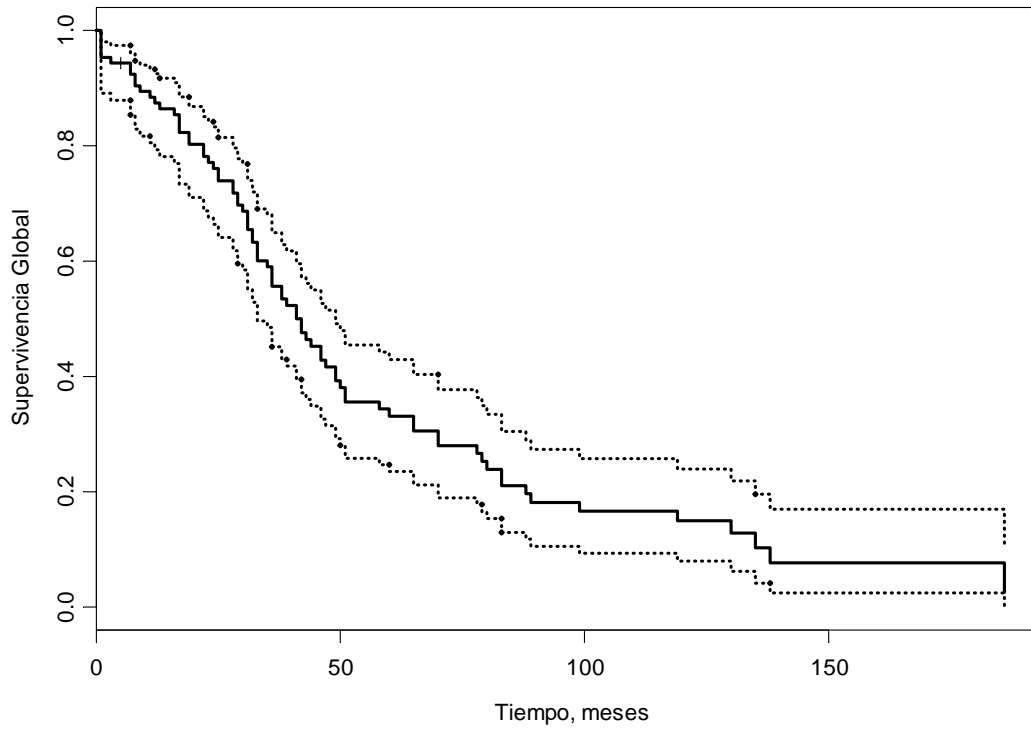
Serie Cancer de Mama Precoz



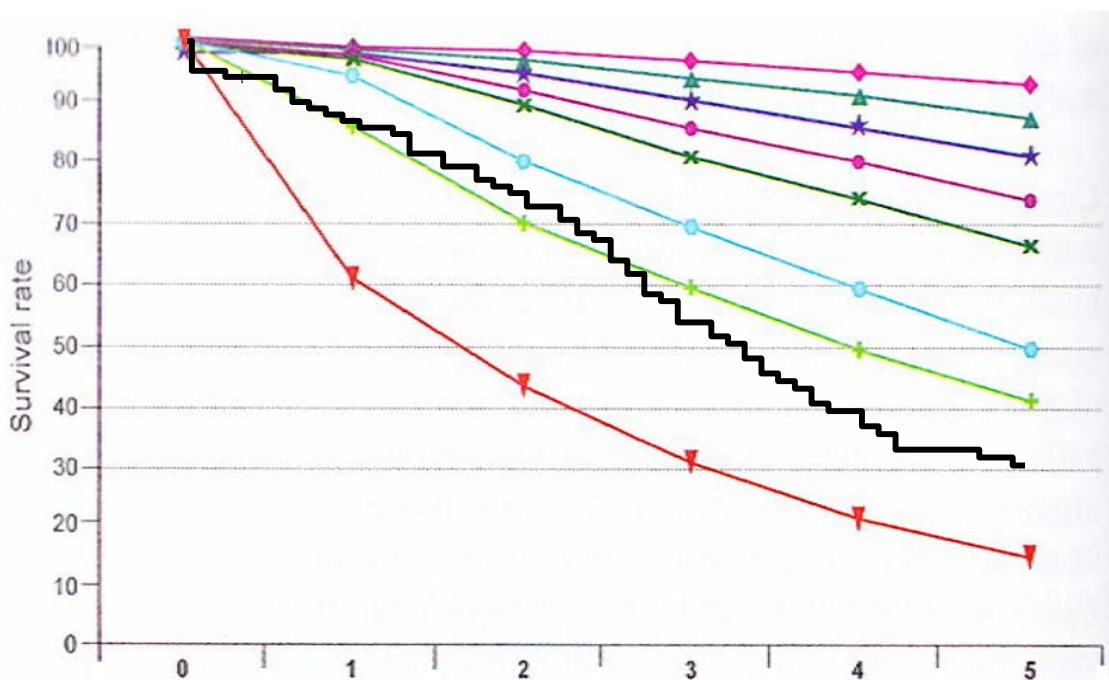
Serie Cancer de Mama Metastásico



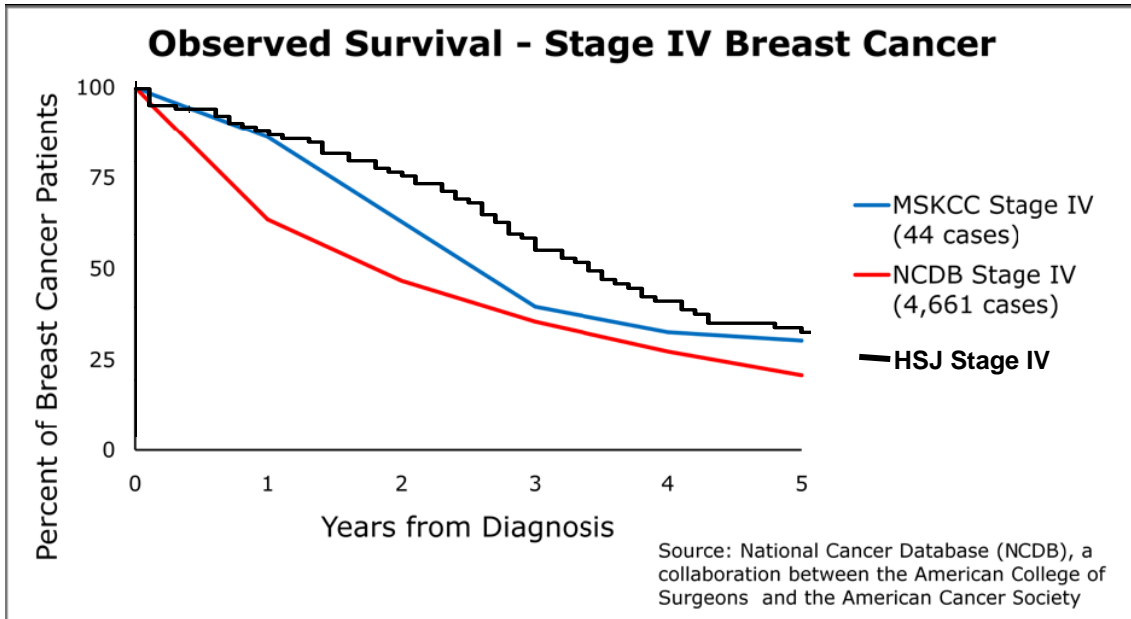
Serie Cáncer de Mama Metastásico desde Metástasis



#	n	events	mean	se(mean)	median	0.95LCL	0.95UCL
#	107	80	58.8	5.55	41	35	50



Este es el gráfico de la AJCC 7ª ed. 2010, con la curva de la supervivencia de mama metastásica nuestra (negro).



Esta es la gráfica de la supervivencia de mama de la NCDB y MSKCC en la web de la MSKCC sobre el resultado del cancer de mama estadio IV diagnosticado en el año 2003 que han publicado en el 2010. He superpuesto nuestra curva de supervivencia.

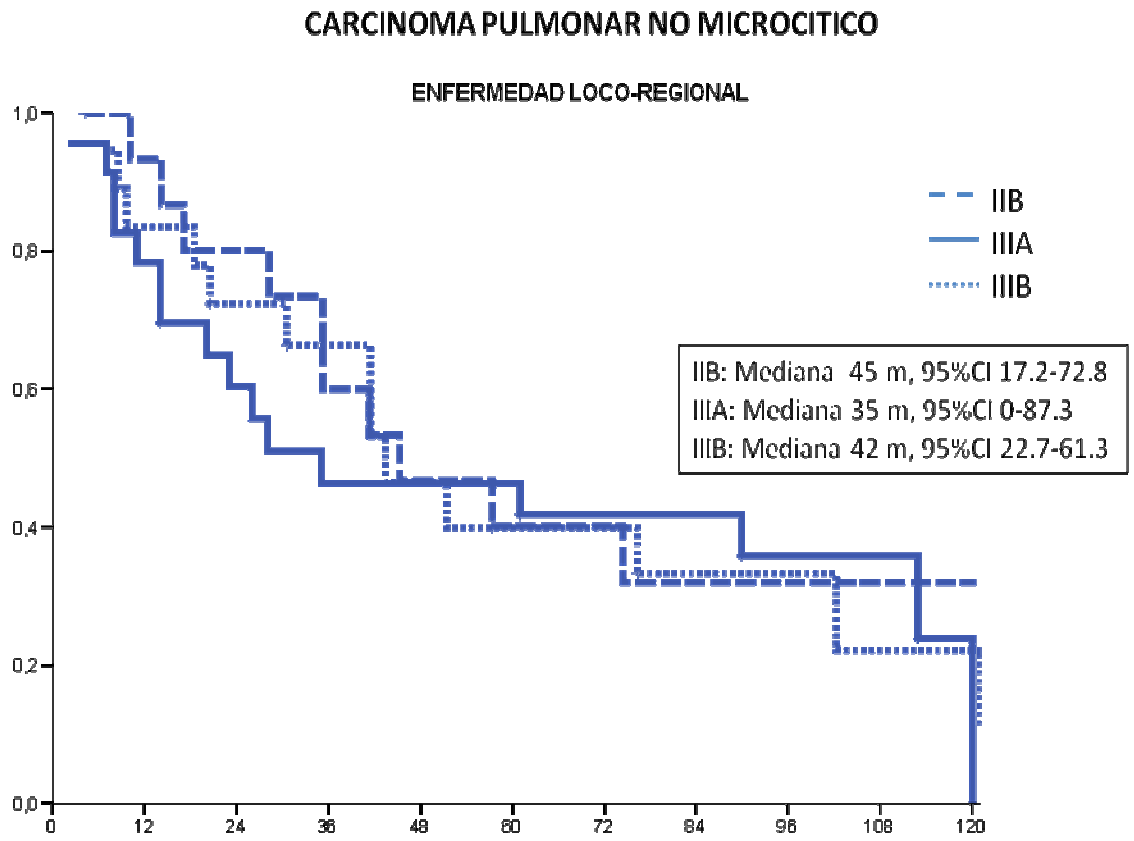


Figura 2. Curvas de supervivencia actuarial (Kaplan-Meier) de estadios IIB, IIIA y IIIB.

**Figura 3. Supervivencia carcinoma no microcítico de pulmón
diseminado**

Serie Pulmón Metastásico

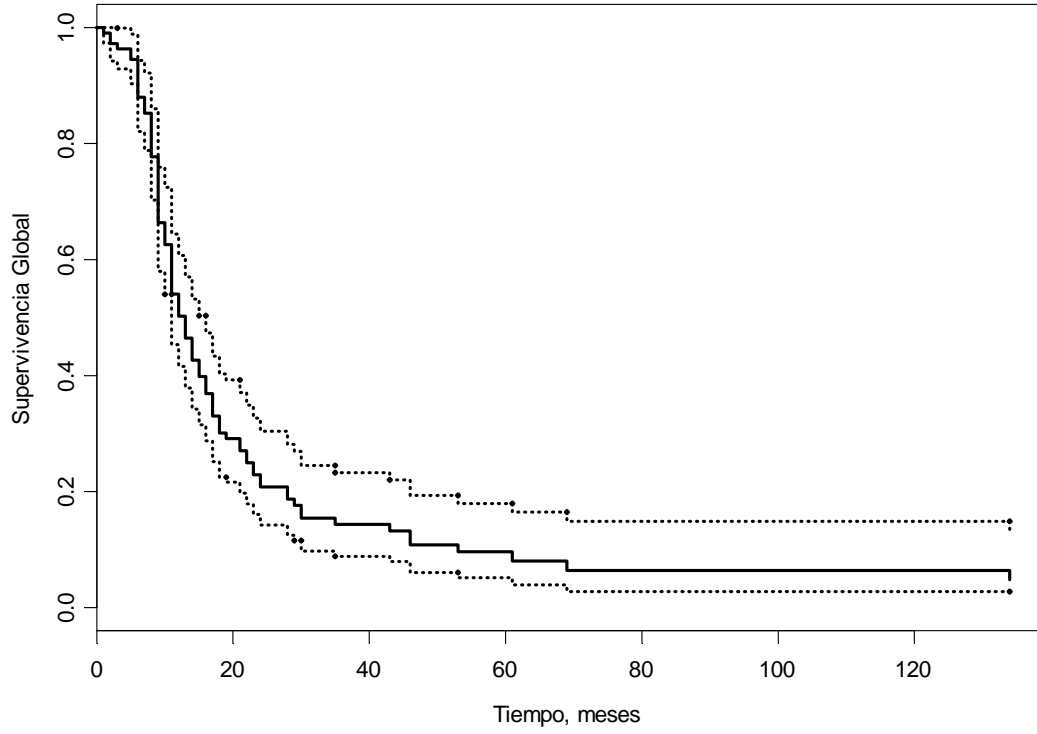


Figura 6

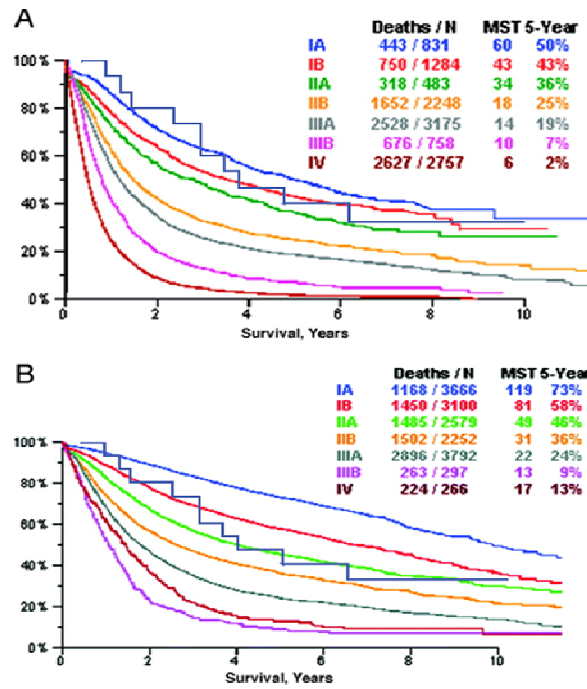


Figura 7

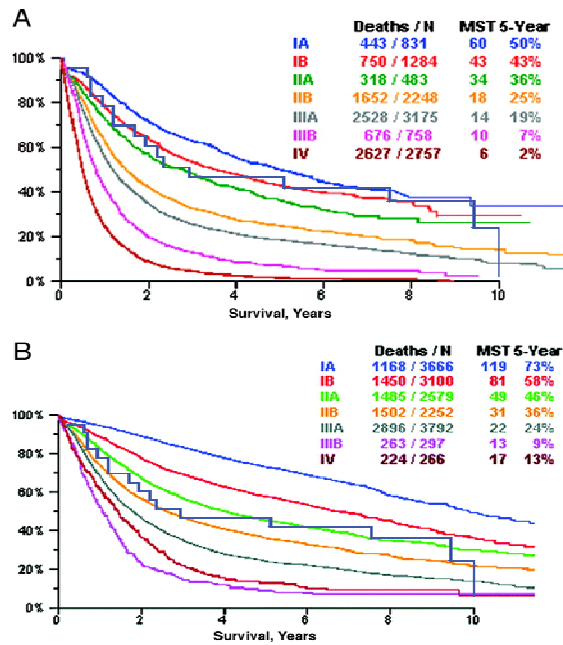


Figura 8

